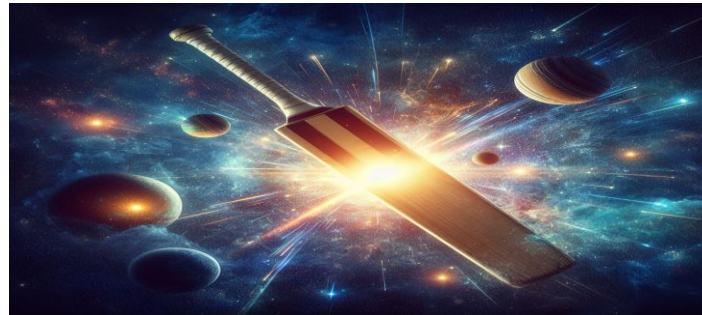




# The **AI** Frontier. Science fiction to **fact**

SAMEER PANWALA  
**MFERD**



All the images were created by AI

Made with Bing Image Creator. Powered by **DALL-E**.

# What is AI?

Introduction to Artificial Intelligence(AI)

**Artificial** - something which is man made and does not occur naturally

**Intelligence** - ability to perceive information from data,  
retain it as knowledge

to be applied later as an adaptive behaviour within an environment or context.

When an machine possess the ability to mimic human traits

i.e make **DECISIONS**, **PREDICT** the future, **LEARN** and **IMPROVE** on its **OWN**

It is said to have **Artificial Intelligence**

# Questions

## **To the audience:**

How many people use AI?

How often do you use AI?

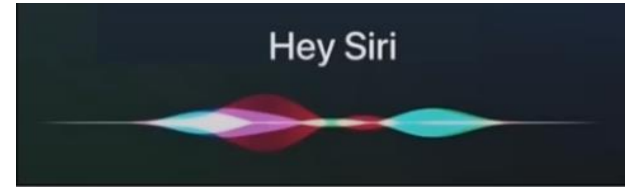
## **To AI:**

Who will win the Cricket World Cup 2023?

How much will Kohli score in the final match?

# APPLICATIONS OF AI

1. **SEARCH ENGINES** - GOOGLE, BING, ETC
2. **VOICE ASSISTANTS** - ALEXA, GOOGLE ASSISTANT, SIRI, CORTANA
3. **NAVIGATION MAPS** - GOOGLE MAPS, UBER MAPS
4. **GAMING** - FIFA, PUBG, ETC
5. **SHOPPING** - AMAZON
6. **RECOMMENDATIONS** - YOUTUBE, NETFLIX, SPOTIFY
7. **SOCIAL MEDIA** - CUSTOMIZED NOTIFICATIONS
8. **CHATBOTS**



# DOMAINS OF AI

**Machine Learning (ML),**

**Deep Learning (DL),**

**Natural Language Processing (NLP),**

**Computer Vision, and Data Science,**

are at the forefront of this technological revolution.

As AI continues to evolve new forms keep getting added

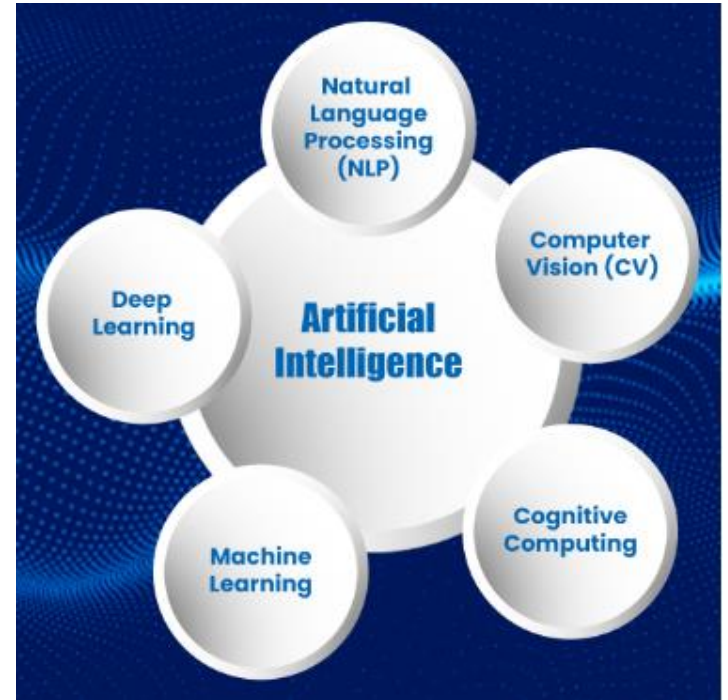
Weak AI, Strong AI, General AI, Regenerative AI

## **NOTE:**

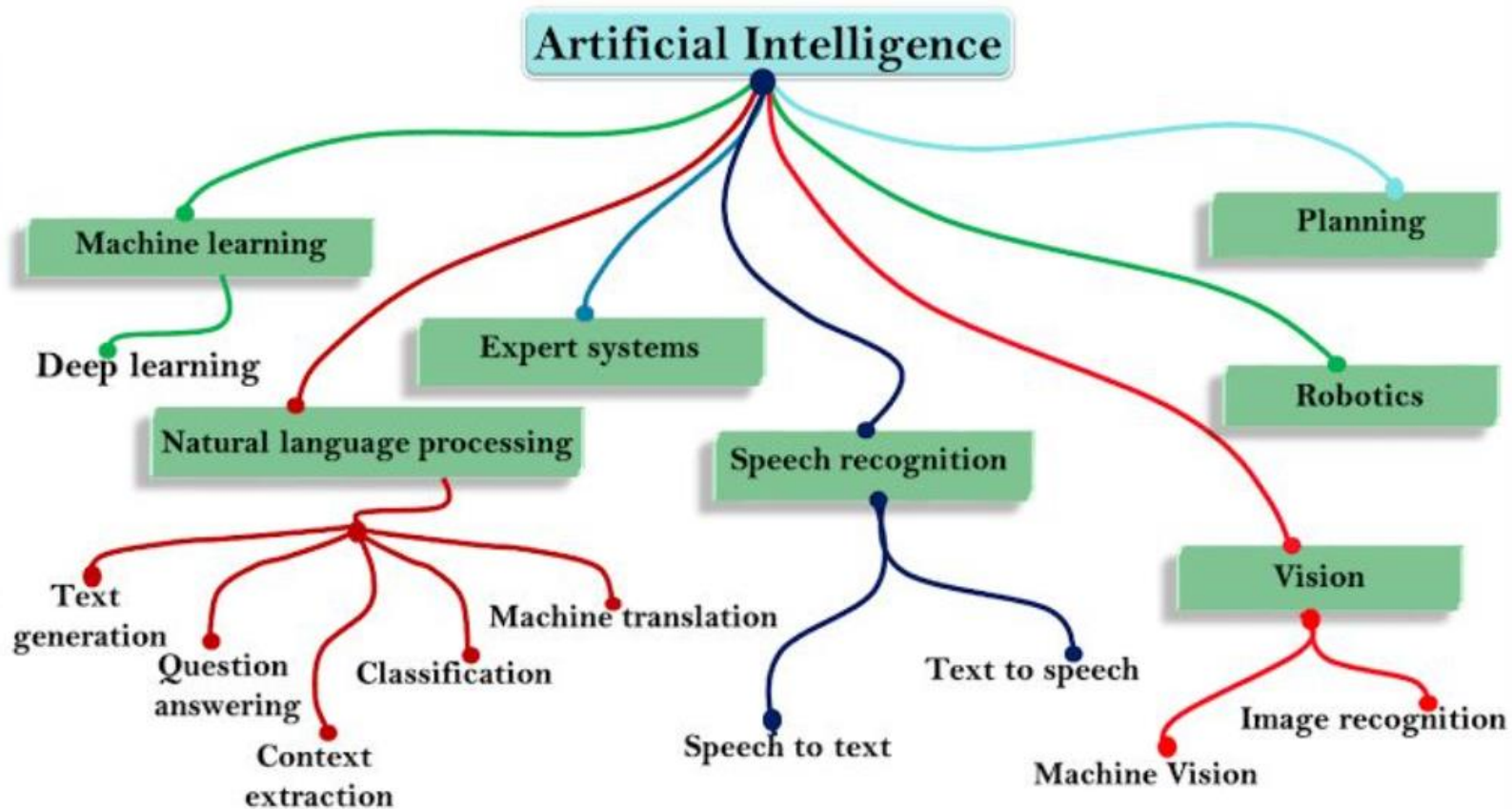
**ANY MACHINE THAT HAS BEEN TRAINED WITH DATA AND CAN MAKE DECISIONS ON ITS OWN CAN BE TERMED AS AI.**

IF IT IS **NOT** TRAINED WITH ANY DATA THEN IT DOES NOT COUNT AS AI.

**SMART PHONES, SMART AC, SMART WASHING MACHINES ... ARE NOT AI**

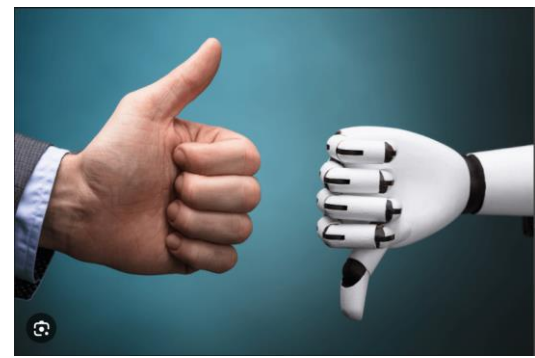


the various aspects in AI could encompass being very vast in terms of how much



now start expecting from the system to GENERATE productive outputs on a fresh batch of unlabelled data, this implies as the 3rd step of humanisation of machines, and how we expect and return work towards making them think and

# What is the impact of AI on society positive or negative?



By automating certain tasks and providing real-time insights, AI can help organizations make faster and more informed decisions. **prevent costly errors or save lives.**

**As AI becomes more commonplace at companies, it may decrease available jobs**, since AI can easily handle repetitive tasks that were previously done by workers.

Now, many reports show that **AI will likely create just as many new jobs as it makes obsolete, if not more.**

AI applications automate the majority of tedious and repetitive tasks. Since we do not have to memorize things or solve puzzles to get the job done, we tend to use our brains less and less.

**This addiction to AI can cause problems to future generations**



# Positive Impacts

**AI gives computers the capacity to learn, reason, and apply logic.**

Scientists, medical researchers, clinicians, mathematicians, and engineers, when working together, can design an AI that is aimed at offering reliable and safe systems for the benefit of society

Digital Assistants and Smart Home Devices

Streaming Services

Creative Work

Fitness Plans

Education

Creating Accessibility

Combating Climate Change

And Even Better Healthcare

# Negative Impacts - DeepFakes - Fake news generated using AI


Top stories >



 Hindustan Times

'Saw my Garba video': Victim of deepfakes, PM Modi gives AI warning

4 hours ago

 Business Standard

WATCH | PM Modi warns against the misuse of AI for creating deepfakes

2 hours ago 

 NDTV

Now Deepfake Video Of PM Modi Singing Garba Song: "Big Concern"

8 hours ago • Marya Shakil

 ANI News

'New Age Sankat...' PM Modi reacts to Deepfake videos on him, expresses concern over AI's dark side

4 hours ago 

 Full coverage

Fake photos  
Fake videos  
Fake audios  
Fake translations

# Composite faces



Future of AI - AI Tools in all work environments



“Technological Acceleration” or “exponential growth”

# Useful AI Tools

Text	ChatGPT	MyEssayWriter.ai	Bard
Design	Adobe Firefly	Midjourney	Leonardo.AI
Video	Descript	2short.AI	Syllaby
Content	Synthesia	FostReply	Taplio
Productivity	Perplexity	Eightify	grammarly
Business	Rationale	taskade	Mixo
Presentations	Gamma	tome	SlidesAI
Research	consensus	ChatPDF	Supertools

# Future with AI

1. SMART HOUSE – ENGLISH VERSION – REMA 1000

1. Treadmill - Sweet16 and Summer of 69

# Reference book

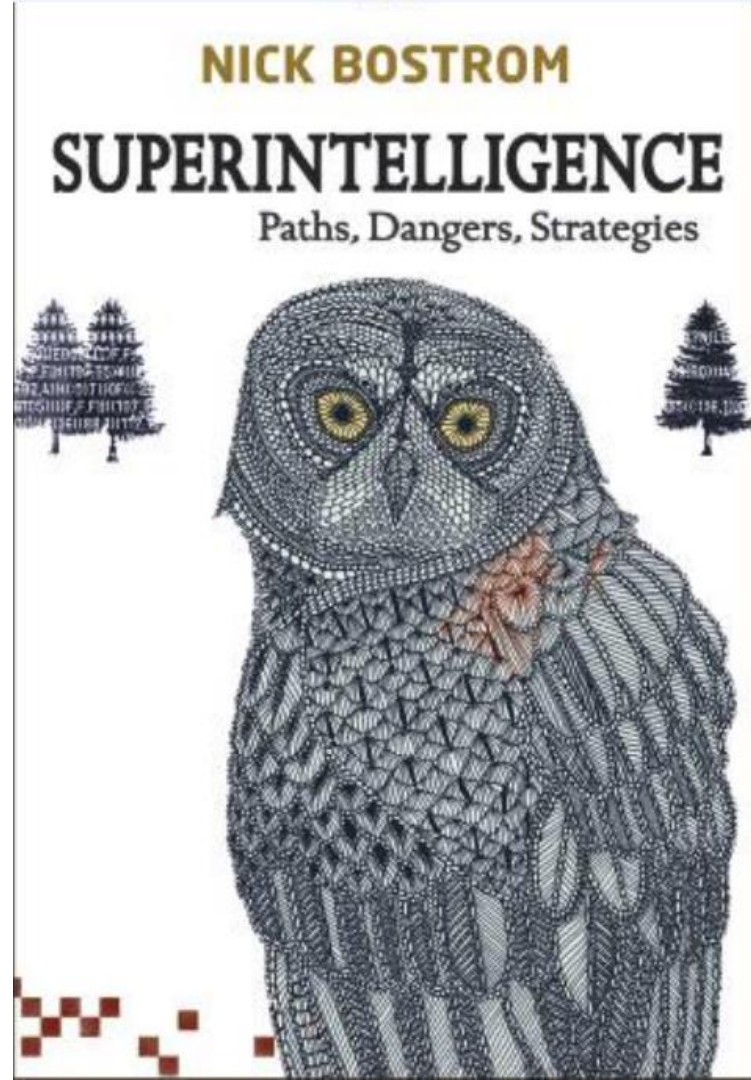
We can tentatively define a superintelligence as any intellect that greatly exceeds the cognitive performance of humans in virtually all domains of interest.

**NICK BOSTROM**

*Director, Future of Humanity Institute*

*Professor, Faculty of Philosophy & Oxford Martin School*

*University of Oxford*



Finally lets use Human intelligence to overcome...

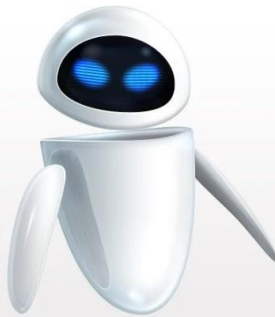
**1) Shaytan**

**1) Nafs**

# WALL·E



WALL·E



EVE

Film released in 2008

WALL·E (Waste Allocation Load Lifter Earth-Class) is the last robot left on Earth, programmed to clean up the planet, one trash cube at a time.

WALL·E robot meets another robot EVE and falls in love with her. Together, they set out on a journey that will alter the fate of mankind.

They overcome AI which is programmed to not let humans come back to Earth





Thank You - Jazakumullah